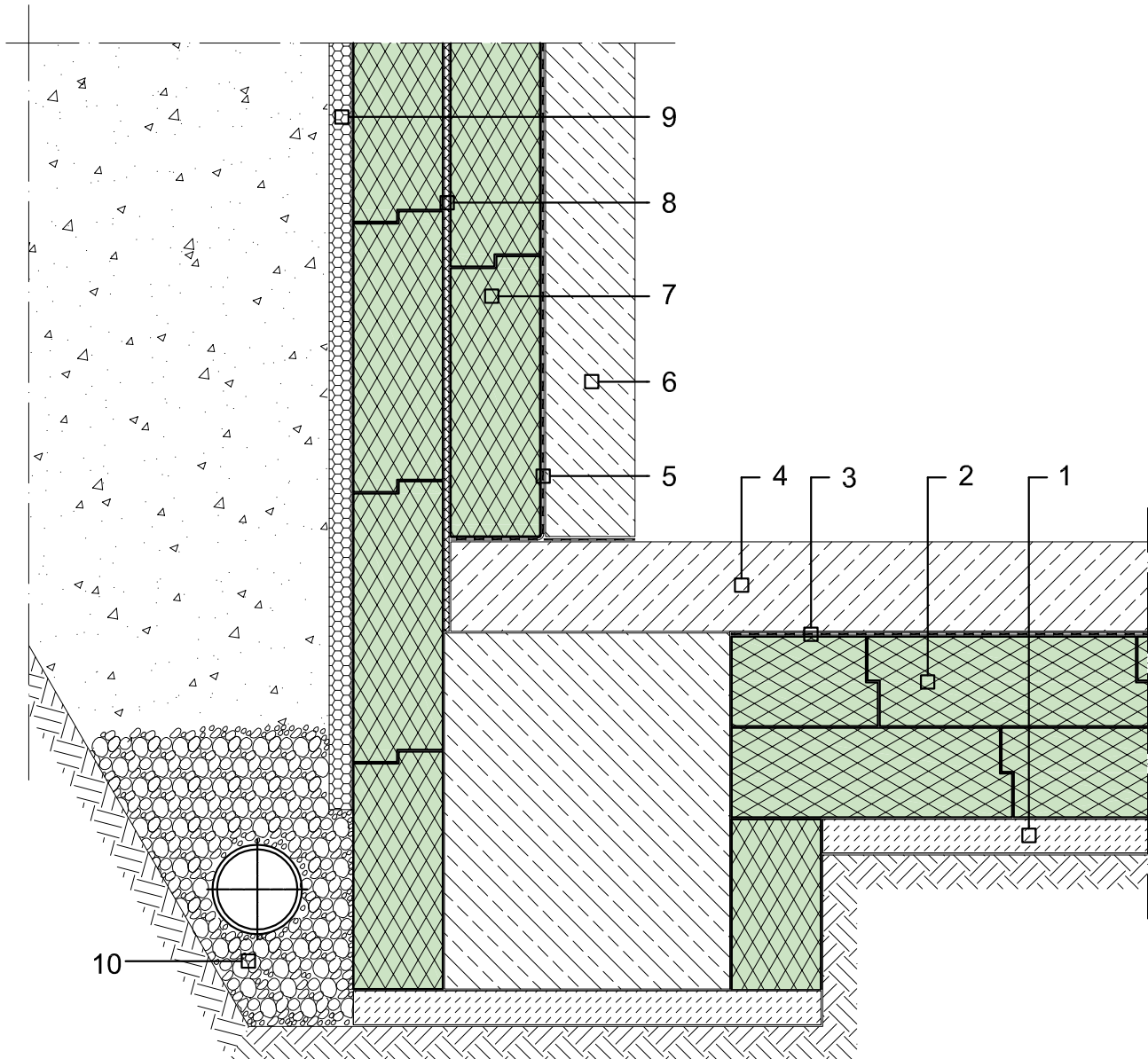


- 1 Subbase
- 2 Styrodur® 3035 CS / 4000 CS / 5000 CS
- 3 Separation layer, e.g., PE film
- 4 Concrete slab
- 5 Waterproofing
- 6 Concrete wall
- 7 Styrodur® 3035 CS / 4000 CS / 5000 CS
- 8 Adhesive to protect against shifting or dislocation
- 9 Drainage board (EPS)
- 10 Filter gravel with drainage pipe



Note:

The information submitted in this drawing is based on our current knowledge and experience and is referring only to our product and its properties at the time of going to print. It does not imply any warranty or any legally binding assurance regarding the condition of our product. Attention must be paid to the requirements of specific applications, especially the physical and technological aspects of construction and building regulations. All mechanical drawings are basic outlines and have to be adapted to each application.

Building element:	PW 004	Perimeter insulation—exterior wall (concrete)—drainage slope	
Scale:	1:15	Detail:	Wall, floor slab, strip foundation
Date:	16.12.14	File:	PW004_Styrodur_C_Wall_floor_slab_strip_foundation_Perimeter_concrete_drainage_slope_multiple_layers.dwg