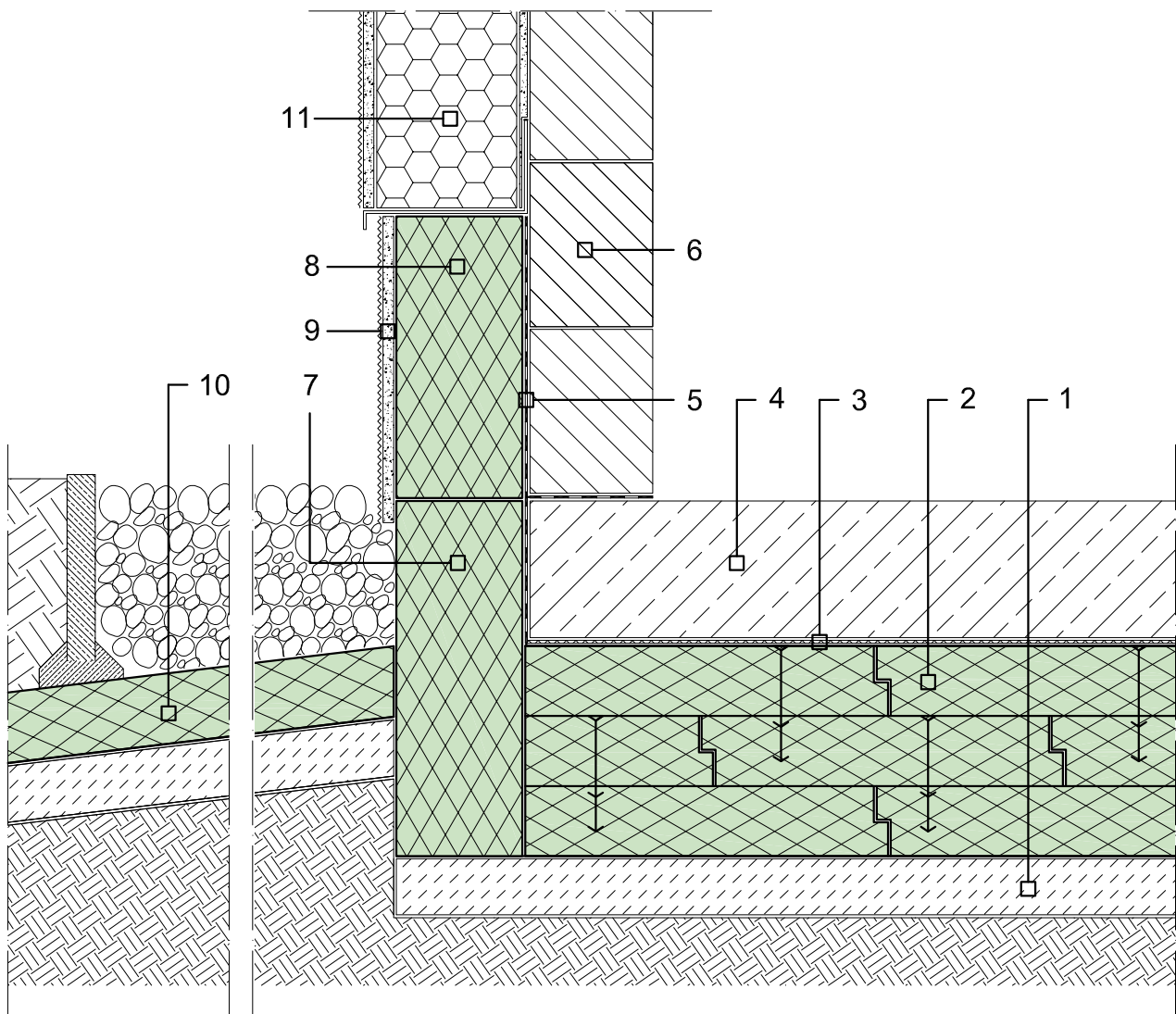


- 1 Subbase
- 2 Styrodur® 3035 CS / 4000 CS / 5000 CS
- 3 Separation layer, e.g., PE film
- 4 Concrete slab
- 5 Waterproofing
- 6 Brickwork
- 7 Styrodur® 3000 CS / 3035 CS
- 8 Styrodur® 2800 C
- 9 Plaster—UV protection
- 10 Frost protection with Styrodur® 3000 CS / 3035 CS, length = 1200 mm
- 11 Exterior insulation (ETICS), e.g., BASF Neopor®



Note:

The information submitted in this drawing is based on our current knowledge and experience and is referring only to our product and its properties at the time of going to print. It does not imply any warranty or any legally binding assurance regarding the condition of our product. Attention must be paid to the requirements of specific applications, especially the physical and technological aspects of construction and building regulations. All mechanical drawings are basic outlines and have to be adapted to each application.

Building element:	PB 001	Perimeter insulation—frost protection—load-bearing foundation slab—insulated with multiple layers	
Scale:	1:10	Detail:	Foundation slab frost protection
Date:	16.12.14	File:	PB001_Styrodur_C_Foundation_slab_frost_protection_Perimeter_load_bearing_multiple_Layers.dwg